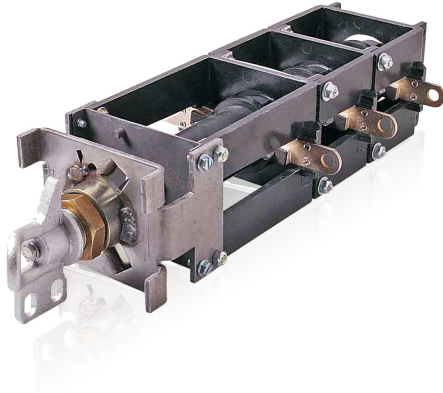


Switches



The Hitachi ABB Power Grids Distribution Transformer Components LBOR-II switch is a manually operated, two position, load make or break, oil immersed, rotary switch. It is designed for use with distribution transformers (pad-mounted or submersible) and self contained distribution switchgear.

With a smaller mounting envelope than most switches on the market today, the LBOR-II switch has been designed to save you money. The reduced envelope allows for smaller equipment that requires less oil and steel to manufacture.

Hitachi ABB Power Grids Distribution Transformer Components LBOR II switches feature a wide range of configurations. To select a switch, please refer to the tables below and locate the appropriate ratings, then select a style number for the required mounting configuration. If interlock hardware kits are required for a nut mount switch, please order the suitable style without hardware and add the interlock hardware kit, style 3A33949G02.

For non-standard configuration options that are not listed in these tables, please contact your Hitachi ABB Power Grids Distribution Transformer Components representative.

LBOR-II ordering information

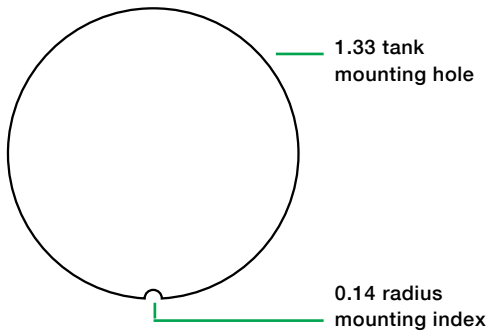
One deck				Style numbers					
Continuous current (A)	BIL (kV)	Maximum voltage (L-G kV)	Mounting orientation	Weld-in without hardware	Weld-in with standard hardware	Weld-in with interlock hardware	Nut mounting with hardware	Nut mounting without hardware	
300	95	8.9	Wall	272D914G01	272D914G11	272D914G14	L095NC3001	L095JC3001	
300	150	21.9	Wall/Cover	272D913G01	272D913G11	272D913G14	L150NC3001	L150JC3001	
400	150	15.5	Wall/Cover	272D923G01	272D923G11	272D923G14	L150NC4001	L150JC4001	

Two deck				Style numbers					
Continuous Current (A)	BIL (kV)	Maximum voltage (L-G kV)	Mounting orientation	Weld-in without hardware	Weld-in with standard hardware	Weld-in with interlock hardware	Nut mounting with hardware	Nut mounting without hardware	
300	95	8.9	Wall	272D914G02	272D914G12	272D914G15	L095NC3002	L095JC3002	
300	150	21.9	Wall/Cover	272D913G02	272D913G12	272D913G15	L150NC3002	L150JC3002	
400	150	15.5	Wall/Cover	272D923G02	272D923G12	272D923G15	L150NC4002	L150JC4002	

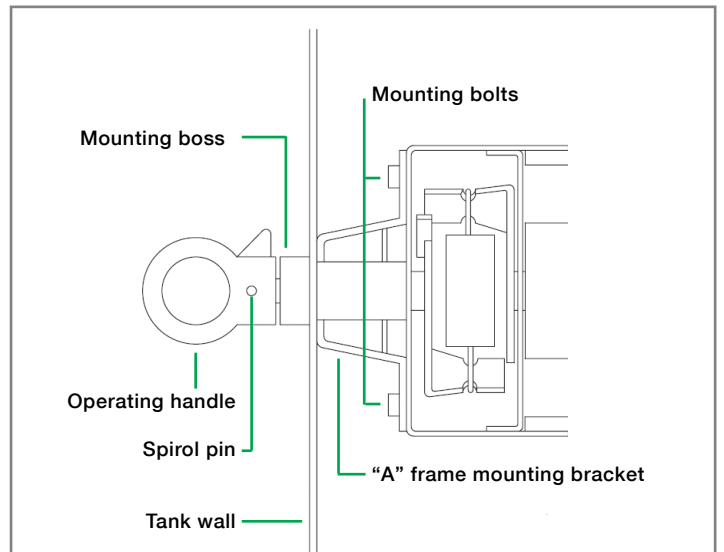
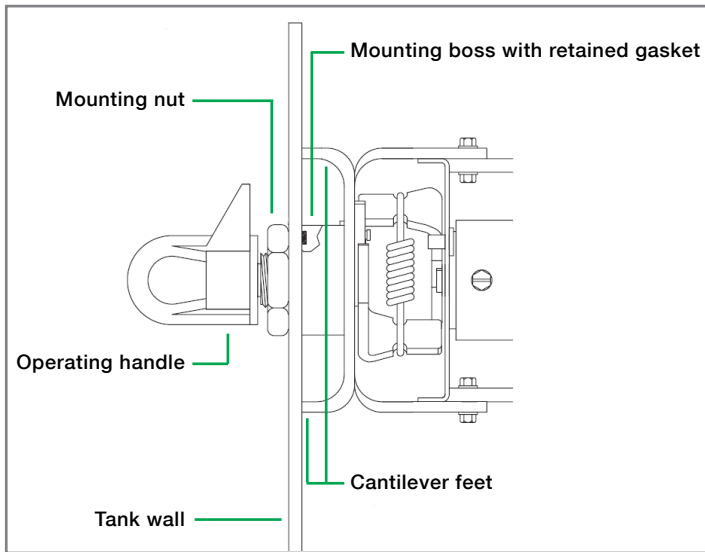
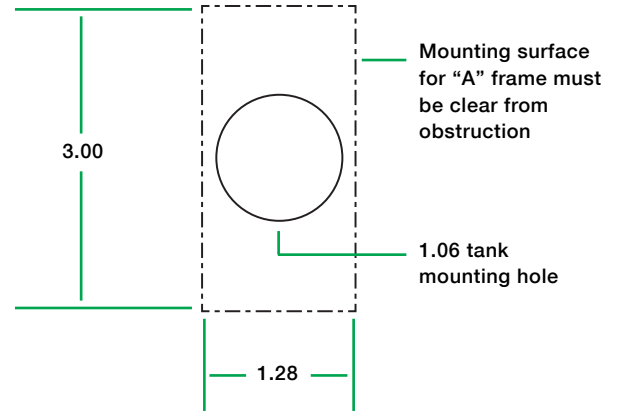
Three deck				Style numbers					
Continuous current (A)	BIL (kV)	Maximum voltage (L-L kV)	Mounting orientation	Weld-in without hardware	Weld-in with standard hardware	Weld-in with interlock hardware	Nut mounting with hardware	Nut mounting without hardware	
300	95	15.5 Grd-Y	Wall	272D914G03	272D914G13	272D914G16	L095NC3003	L095JC3003	
300	150*	38 Grd-Y	Wall/Cover	272D913G03	272D913G13	272D913G16	L150NC3003	L150JC3003	
400	150*	27 Grd-Y	Wall/Cover	272D923G03	272D923G13	272D923G16	L150NC4003	L150JC4003	

* Per IEC 265-1 the BIL rating for these styles is 180 kV

LBOR nut mounting



LBOR weld-in mounting



* Dimensions are presented in inches